



## Navigation Notice No 8 of 2022

### Construction works Exclusion Zone

Notice is hereby given that as from 1200hrs 14/05/2017 area bounded by the following positions (fig 1) will become a construction works exclusion zone

CZ1	57°07.63'N	002°03.05'W
CZ2	57°07.63'N	002°02.15'W
CZ3	57°08.28'N	002°02.15'W
CZ4	57°08.28'N	002°02.71'W
CZ5	57°08.28'N	002°02.91'W

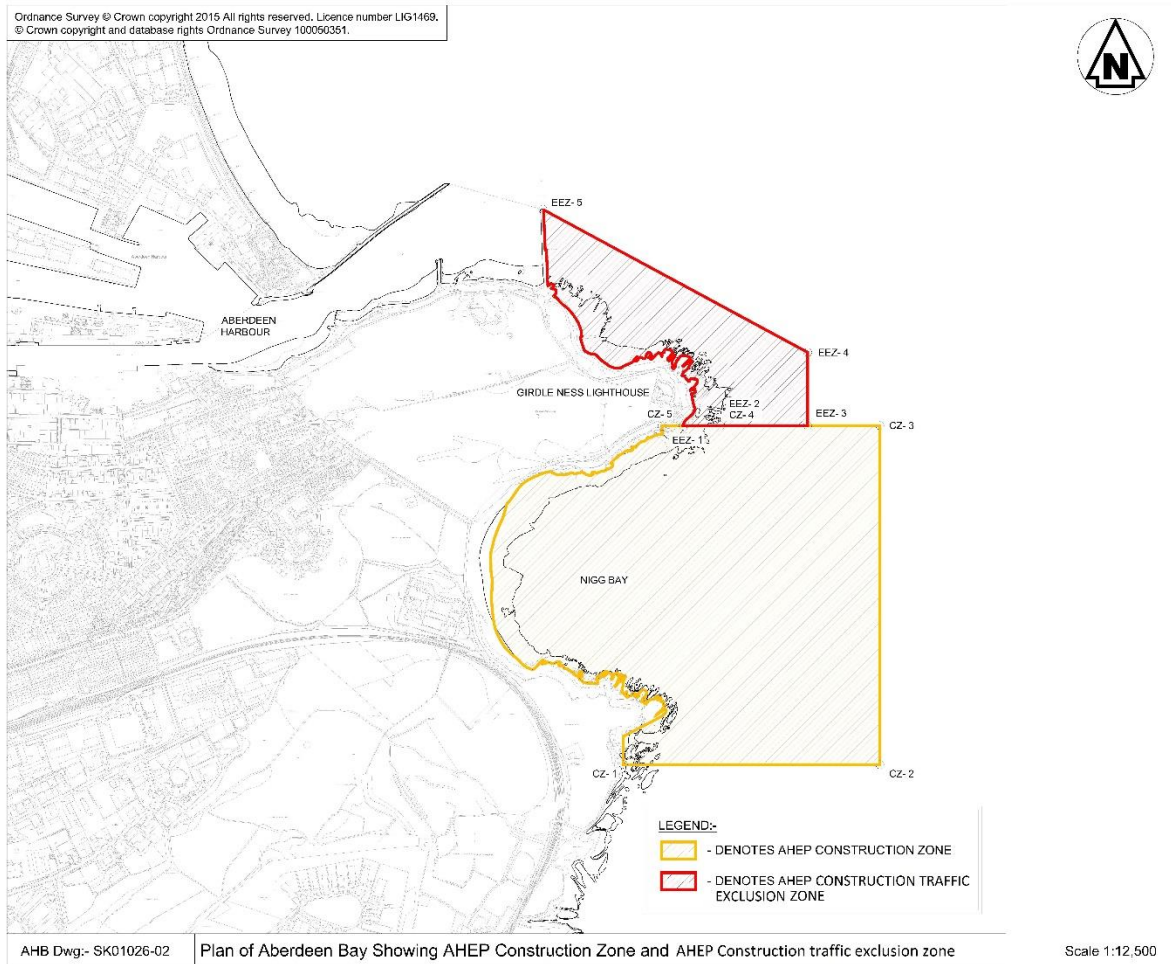
This Construction works Exclusion Zone is not to be entered with the exception of vessels engaged in the construction of the Aberdeen Harbour Expansion Project.

Notice is hereby given that as from 1200hrs 14/05/2017 area bounded by the following positions (fig 1) will become a construction traffic exclusion zone

EEZ1	57°08.28'N	002°02.84'W
EEZ2	57°08.28'N	002°02.71'W
EEZ3	57°08.28'N	002°02.40'W
EEZ4	57°08.42'N	002°02.40'W
EEZ5	57°08.69'N	002°03.33'W

The area bounded by the following positions (Fig 1) will be designated as a construction traffic exclusion zone, all vessels employed in the construction of the Aberdeen Harbour Expansion Project are prohibited from entering this area. This includes vessels engaged in crew transfers to vessels operating in Nigg Bay.

Fig 1



Further information regarding this and other hydrographic information may be obtained from Aberdeen VTS on VHF channel 12, from Port Operations on 01224 597000 or from the Aberdeen Harbour website,

Ewan Rattray  
Deputy Harbour Master  
01/01/2022

<http://www.aberdeen-harbour.co.uk/operations/information-for-port-users/navigation-notice/>

Owners, Agents, Berth Operators etc should ensure that the contents of this Navigation Notice are made known to the Masters of their vessels.