

LOCATION

The map illustrates the Telford Dock area, with a red arrow indicating the proposed location of the Telford Dock. The map includes labels for various docks and wharves, such as Waterloo Quay East, Victoria Dock, Telford Dock, and Tidal Harbour. It also shows the location of the Marine Operating Centre and the Vancouver Convention Centre.

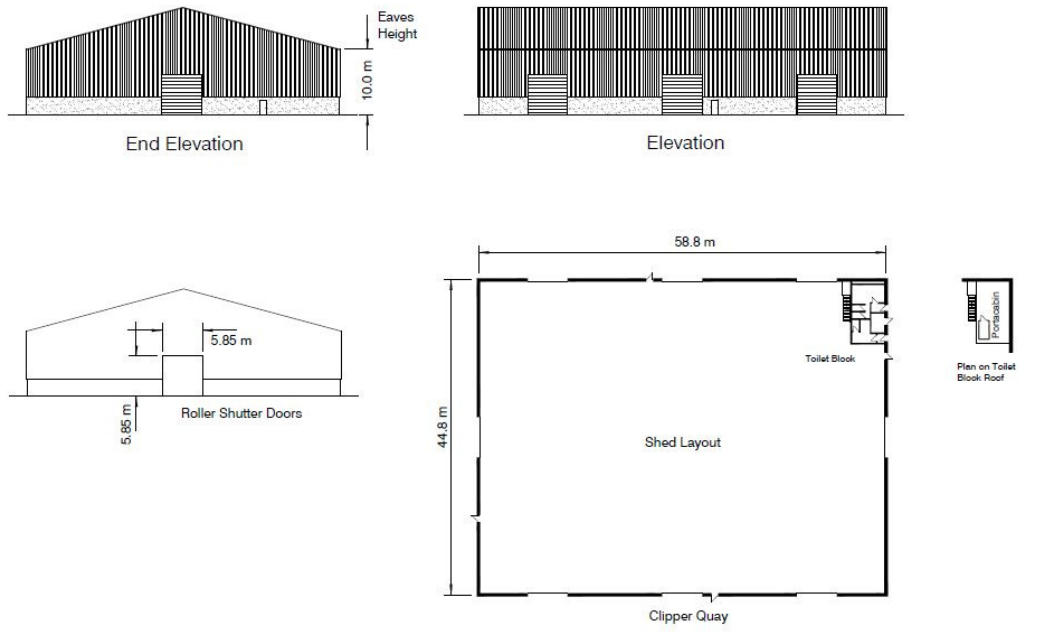
2,617 square metres

10m eaves height

5.85m x 5.85m door height

Transit Shed comprises a single span steel portal frame building with concrete block dado height walls with profile metal cladding above with pitched roof. Shared common user toilets available for use. Shutter door access from the transit shed leads directly onto Clipper Quay quayside area and external storage/project area space adjoining the transit shed.

TRANSIT SHED 8, CLIPPER QUAY, YORK STREET, PORT OF ABERDEEN



ACCOMMODATION

External concrete storage/working project area adjoining the transit shed may also be made available if required.

USE

External concrete storage/working project area adjoining the transit shed may also be made available if required.

ENTRY / DURATION

Entry can be given on completion of a Licence Agreement with Port of Aberdeen for the area. Duration of use is flexible dependent on extent of area required in connection with the use requested.

UTILITIES

Port of Aberdeen shall recharge the cost of utilities used in connection with the use and extent of area required.

VAT

Licence fees quoted will be exclusive of VAT.

VIEWS &
FURTHER DETAILS

+44 (0)1224 597 000



j-oakey@portofaberdeen.co.uk



16 Regent Quay, Aberdeen

