



## IDEALLY LOCATED TRANSIT SHED FOR LEASE OR LICENCE

### LOCATION

The Transit Shed is located to the south of York Street on the northern part of Port of Aberdeen's estate bordering Clipper Quay and benefits from good transport links leading towards the north and south of the city. Access is available via York Street.



### THE DETAILS

2,570 square metres

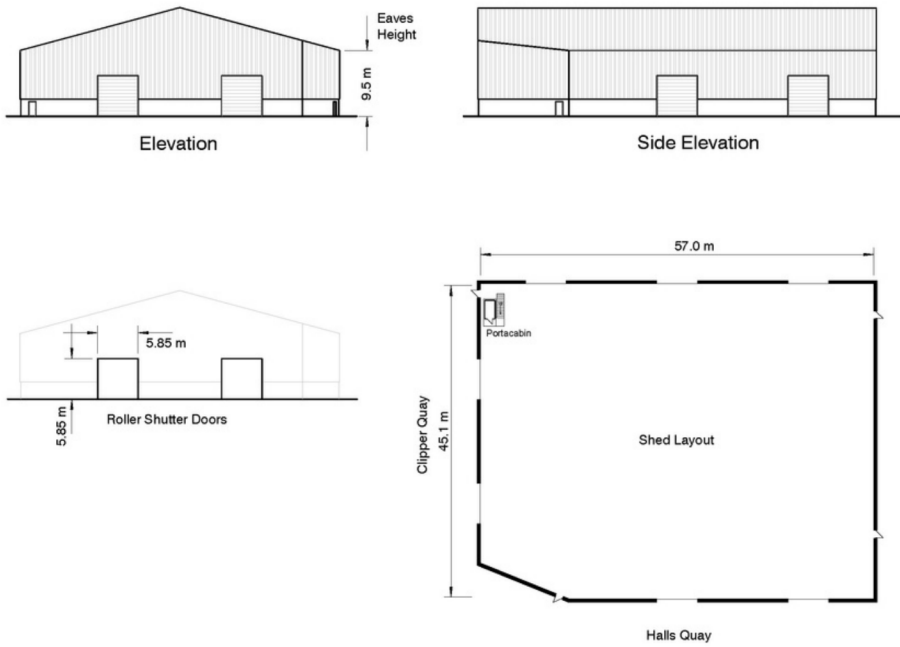
9.5m eaves height

5.85m x 5.85m door height

### DESCRIPTION

Transit Shed 9 comprises a single span steel portal frame building with concrete block dado height walls with profile metal cladding above with pitched roof. Shared common user toilets available for use. Shutter door access from the transit shed leads directly onto Clipper Quay quayside area and external storage / project area space adjoining the transit shed.

# TRANSIT SHED 9, CLIPPER QUAY, YORK STREET, PORT OF ABERDEEN



## ACCOMMODATION / USE

Flexible and clean storage space suitable for multiple uses. External concrete storage / working project area adjoining the transit shed may also be made available if required.

## ENTRY / DURATION

Entry can be given on completion of a Licence Agreement or lease with Port of Aberdeen for the area. Duration of use is flexible dependent on extent of area required in connection with the use requested.

## UTILITIES

Port of Aberdeen shall recharge the cost of utilities used in connection with the use and extent of area required.

## VAT

Licence fees quoted will be exclusive of VAT.

VIEWINGS &  
FURTHER DETAILS

+44 (0)1224 597 000



g-smith@portofaberdeen.co.uk



16 Regent Quay, Aberdeen

