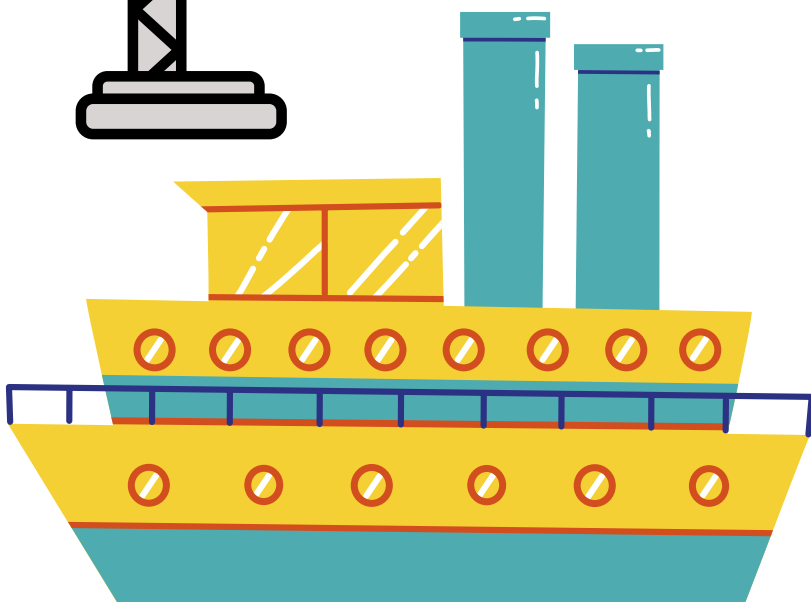
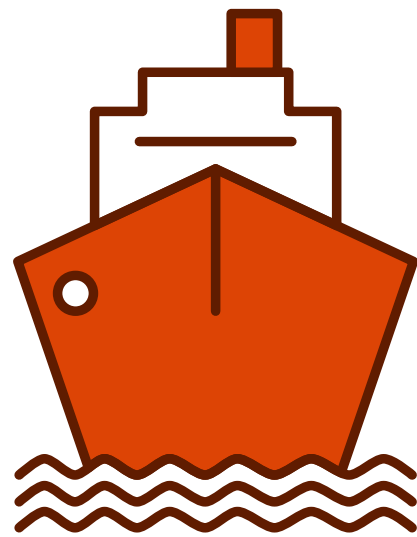
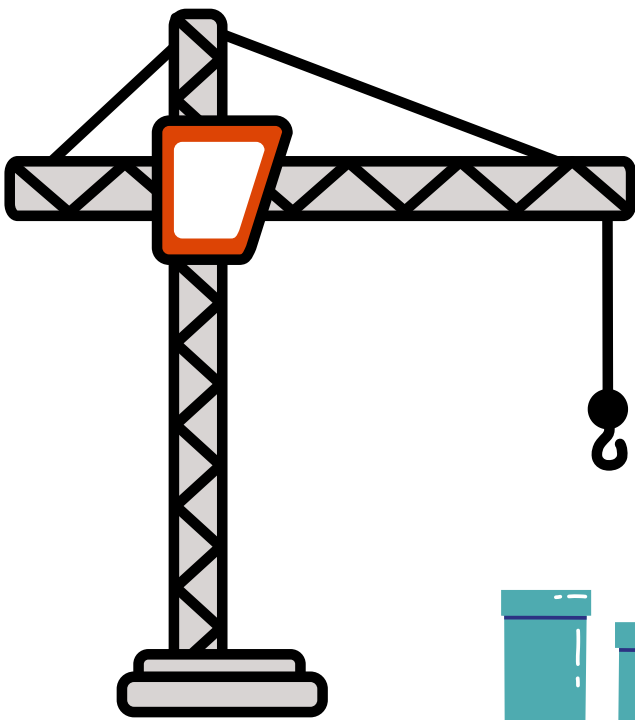


Inside Aberdeen Harbour

Activity Pack



Name

WHAT IS A HARBOUR?

A Harbour is a place where ships of all shapes and sizes sail in and out of. When ships are in a harbour, they load and unload lots of different things which are used by people every day.

SHIPS FROM AROUND THE WORLD COME TO ABERDEEN HARBOUR.
CAN YOU REARRANGE THE LETTERS TO FIND OUT WHERE THEY
COME FROM?

LTYAI..... ENCARF..... ASRLAIATU.....

DCNAAA..... ROWANY..... ZABILR.....

LOTS OF MEN AND WOMEN WORK AT THE HARBOUR EVERY DAY.

When you work at the Harbour, you have to wear special clothing to make sure you are safe. Join up the pictures with the descriptions to find out why each item is important.



To protect your head from heavy objects that may fall.



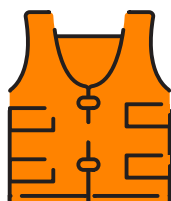
To protect your feet and toes from heavy objects, and to stop slips on wet ground.



To keep you afloat in water.



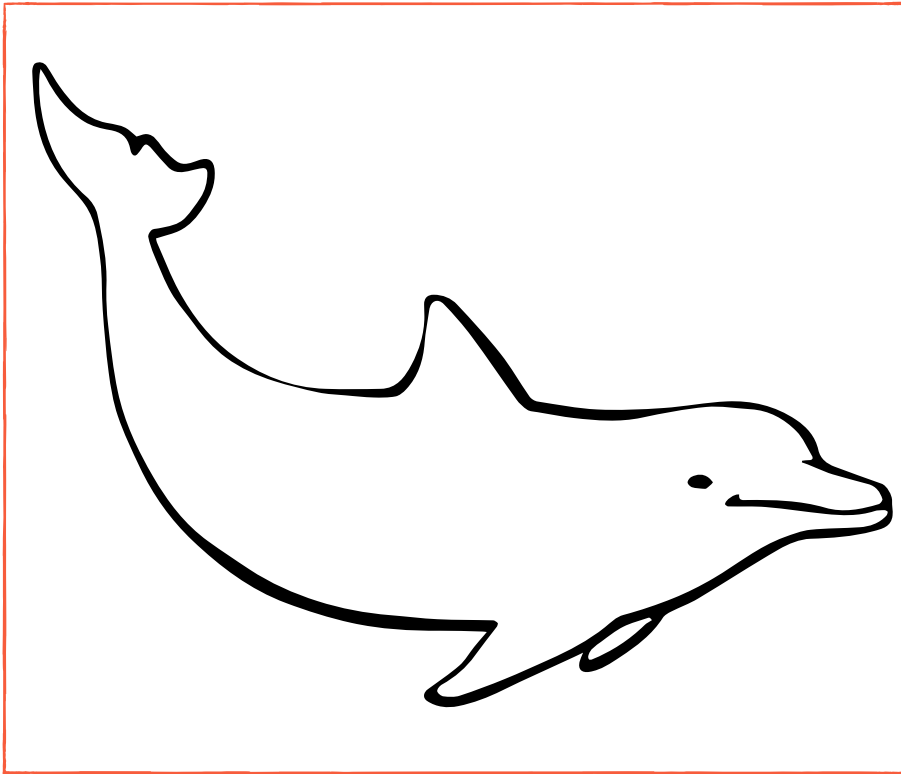
To protect your hands and fingers from sharp or heavy objects.



To protect your eyes from sharp objects and electrical sparks.

DOLPHINS AND SEAGULLS LIKE TO COME NEAR ABERDEEN HARBOUR. HAVE YOU SEEN ONE BEFORE?

Colour in the pictures and fill in the blanks to write a story about them.



My dolphin is called.....

.....

It likes to eat.....

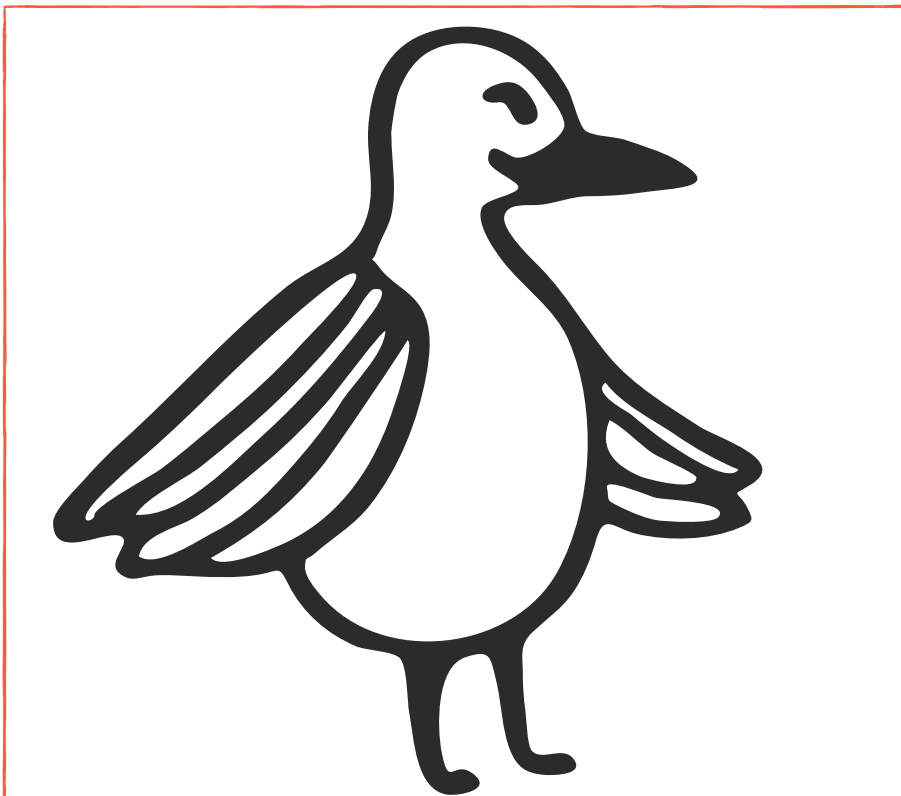
.....

Its favourite thing to do
is.....

.....

If my dolphin could talk, it
would say.....

.....



My seagull is called.....

.....

It likes to eat.....

.....

Its favourite thing to do
is.....

.....

If my seagull could talk, it
would say.....

.....

FOR NEARLY 900 YEARS, THE SHIPS IN ABERDEEN HARBOUR HAVE CARRIED DIFFERENT THINGS TO AND FROM OTHER HARBOURS.

Complete the word search to find out what is sometimes carried on the ships.

W I N D T U R B I N E S U C N X R K
 S B S S W J C A P M A N C H O R S L
 W J D T C B A R L E Y T K D M S V G
 Q V C S G R Z F F O O D F K V E Z H
 U N D E R W A T E R P I P E S K Q W
 X C S G G M J P G C A T T L E J G W
 P L U H X O W F M D Q C Q V T J G O
 S W M E E Y J I O E R M J K H D U O
 O Y Z L Y E X S D V T H Z E S C R L
 C E W Y X I P H A O L A R O C K F K
 V Q Z W U F R O A D S A L T T K U B
 C Y C A R S T Y H K V Y U A P H L S

- | | | | |
|---------|-----------|------------------|------|
| ANCHORS | FISH | SCRAP METAL | WOOL |
| BARLEY | FOOD | SHEEP | |
| CARS | ROAD SALT | UNDERWATER PIPES | |
| CATTLE | ROCK | WIND TURBINES | |

SHIPS ARE MADE IN A CLEVER WAY WHICH MEANS VERY HEAVY ITEMS CAN BE CARRIED ON THE WATER.

Which item on the list do you think would be the heaviest?

.....

Which item on the list do you think would be the lightest?

.....

WE ARE BUILDING ANOTHER HARBOUR IN ABERDEEN WHICH WILL BE CALLED 'SOUTH HARBOUR'.

When it is finished, the largest ships in Scotland will sail in and out of it.

SOUTH HARBOUR WILL BE USED FOR MANY THINGS. IT WILL HELP SCOTLAND MAKE CLEAN ENERGY TO POWER OUR HOMES, CARS AND BUILDINGS.

The ships in South Harbour will carry different parts of wind turbines and help to make sure turbines in the sea are working properly. Can you find the route for the ship to take from South Harbour to the wind turbines?

