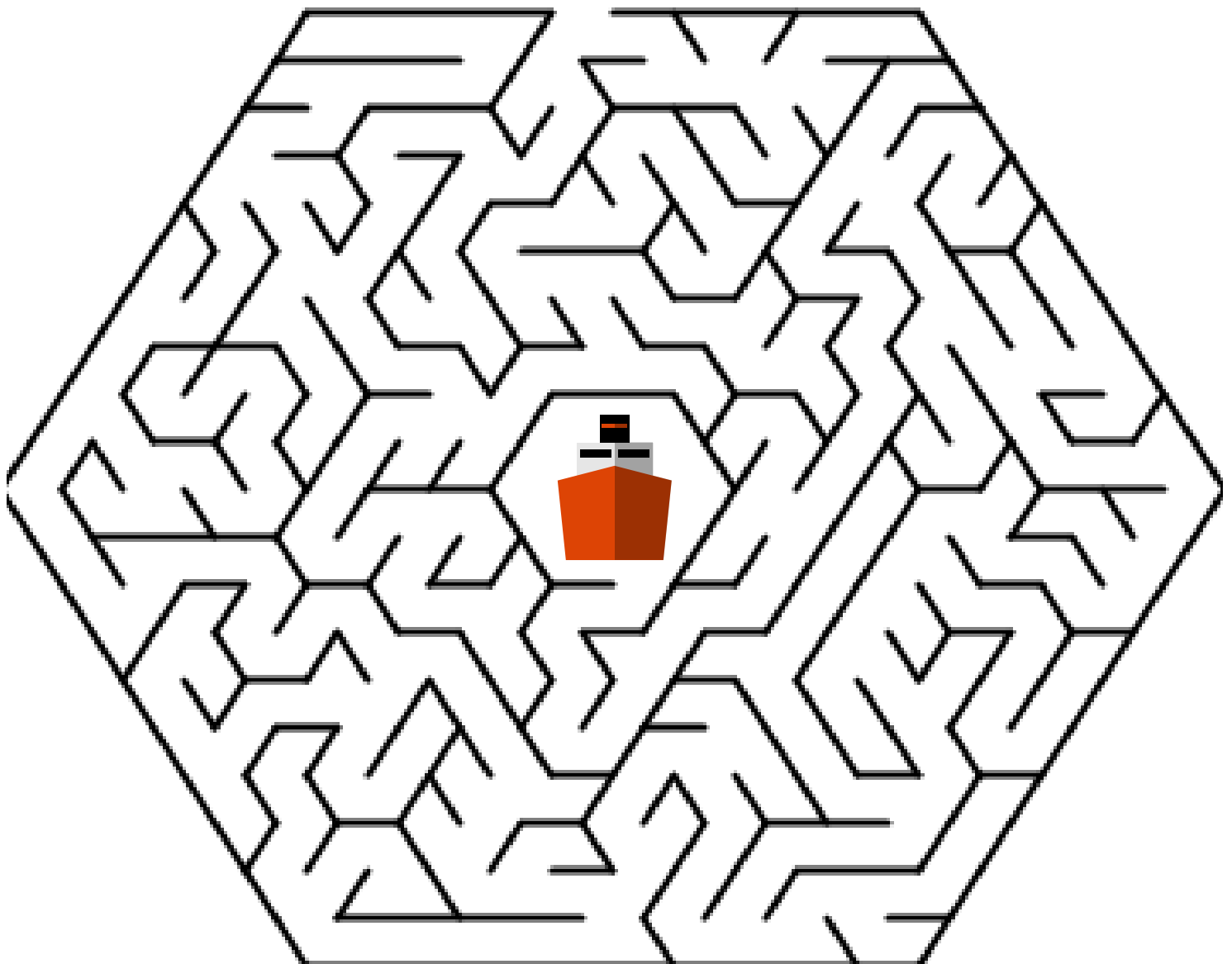


**INSIDE
ABERDEEN
HARBOUR
ACTIVITY PACK
PART 2**

Aberdeen Harbour and energy

For more than 60 years, Aberdeen Harbour has worked with companies from all over the world to produce energy for our homes, cars and buildings. The ships that come in and out of the Harbour visit many oil rigs in the North Sea, and carry items that help take oil and gas from under the sea and bring it to land, so we can use it as energy. **Can you help the ship find its way out of Aberdeen Harbour to the oil rig?**



How well do you know your energy?

Energy is another word for power. Energy makes things move and grow, and exists in different forms, such as heat, light, electric, mechanical and sound. **Can you find out what these energy words mean? Write the definitions in the box.**

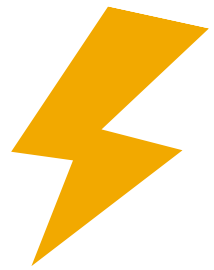
Megawatt

Solar panel

Generator

Battery

Energy wordsearch



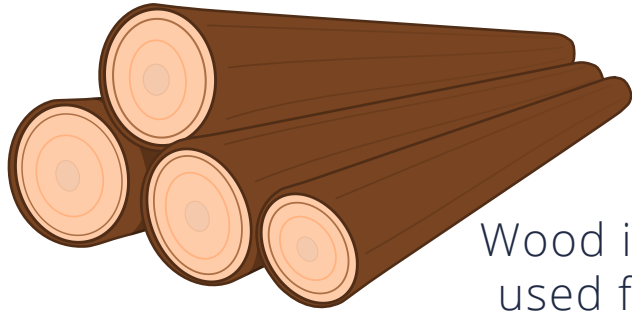
Can you find the words related to energy?

T	T	W	R	E	N	E	W	A	B	L	E	S	Y
I	O	I	O	I	L	N	V	H	N	V	O	L	T
G	H	S	O	L	A	R	P	A	N	E	L	B	E
W	I	N	D	T	U	R	B	I	N	E	V	L	H
B	A	T	T	E	R	Y	U	T	E	A	E	N	N
N	E	Y	I	E	G	R	A	H	C	O	A	T	T
Y	H	L	S	H	E	A	T	E	N	G	I	N	E
G	C	M	E	G	A	W	A	T	T	U	A	T	E
R	O	A	T	E	K	I	L	O	W	A	T	T	G
E	Y	T	I	C	I	R	T	C	E	L	E	I	G
N	A	T	U	R	A	L	G	A	S	E	E	E	H
E	T	N	E	O	N	A	T	P	O	W	E	R	W
W	R	V	N	F	G	E	N	E	R	A	T	O	R
H	Y	D	R	O	G	E	N	O	A	E	A	O	B

Megawatt
Hydrogen
Electricity
Engine
Solar panel
Charge

Generator
Force
Volt
Renewables
Power
Heat

Battery
Natural gas
Kilowatt
Oil
Wind turbine
Energy



In 2020, 3,234 tonnes of logs were imported into Aberdeen Harbour.

Wood is a very useful material that can be used for lots of things. **Can you identify and draw four things that are made from wood?**

THIS IS A.....

THIS IS A.....

THIS IS A.....

THIS IS A.....

Geography quiz

Ships arrive into Aberdeen Harbour from nearly 40 different countries. **Can you match the country with its shape and identify the country's capital? You might need to look at a map!**

Finland

Capital:.....

Italy

Capital:.....

Japan

Capital:.....

Nigeria

Capital:.....

France

Capital:.....

Russia

Capital:.....



The William

Hundreds of years ago, in 1596, a ship called The William set sail from Aberdeen Harbour to a place called Newfoundland, in what is now called Canada. Historical artefacts show that it was the first ship to sail from Scotland to Newfoundland.

The Master and Skipper of The William was called William Findlay. **Can you imagine you're William Findlay in 1596, sailing from Aberdeen to Newfoundland, and write a diary entry?** Use some of the prompts below to complete the diary on the next page.

What is it like on board
The William?

What is The William
made out of?

Have you seen any
interesting marine animals
while at sea?

Who else is on board the
ship?

What have you been
eating on your journey?

What are you looking forward
to seeing when you reach
Newfoundland?

How did you feel when you
left Aberdeen Harbour?

What has the weather
been like for sailing? Has
the sea been choppy?



Diary entry from The William



Dear diary...

Regulating our safety

When you do different tasks at the Harbour, you have to obey certain regulations to keep you safe. These regulations are laws and have different names. **Can you identify the right regulation to match the tasks?**

Malcolm must fix something in the vessel engine room. The engine room is small and enclosed. Which regulation should he follow?.....

Sarah has been asked to clean out the gutters on the roof of the office building. Which regulation should she follow?
.....

Steph is changing the lightbulb at the reception desk. Which regulation should she follow?

John needs to lift a heavy box of paper for the printer. Which regulation should he follow?.....

Jill is using a very loud piece of equipment in the workshop. Which regulation should she follow?

Peter is using a bleach to clean the bathroom. Which regulation should he follow?

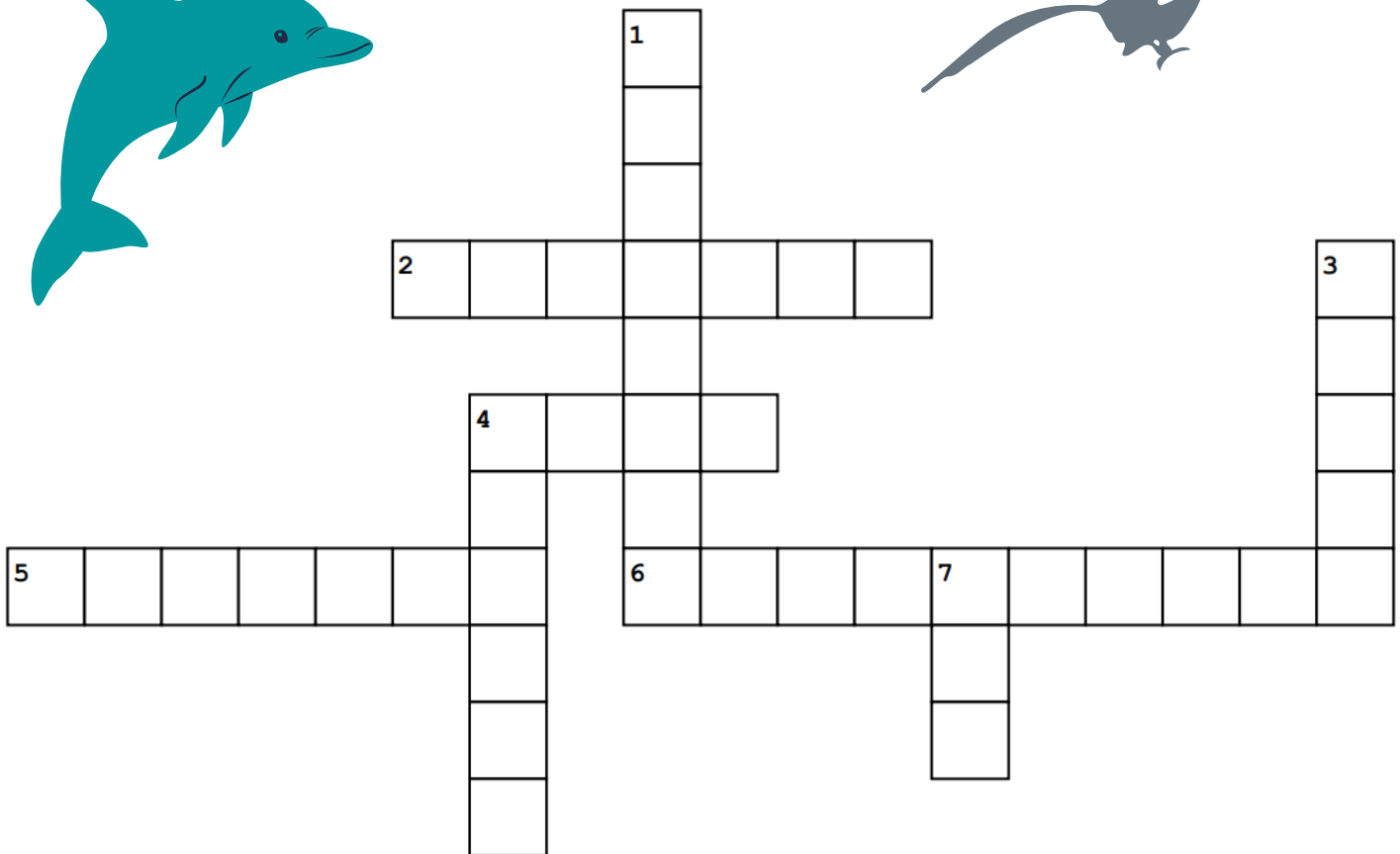
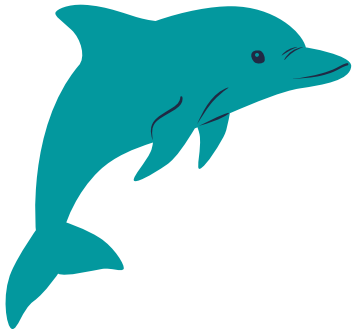
Choose from these regulations:

1. Working at Height Regulations
2. Confined Space Regulations
3. Control of Substances Hazardous to Health Regulations
4. Manual Handling Operations Regulations
5. Control of Noise at Work Regulations
6. Electricity at Work Regulations



Harbour wildlife crossword

Can you find the wildlife often seen at the Harbour?



ACROSS

2: This animal is fun to swim with

4: A marine mammal with a thick layer of blubber

5: A noisy bird which likes to pinch human food

6: A bright coloured bird with a long beak

DOWN

1: A type of whale with a bump on its back

3: A marine mammal which makes a den with sticks

4: A tasty fish with light pink meat

7: A land animal with a bushy tail

