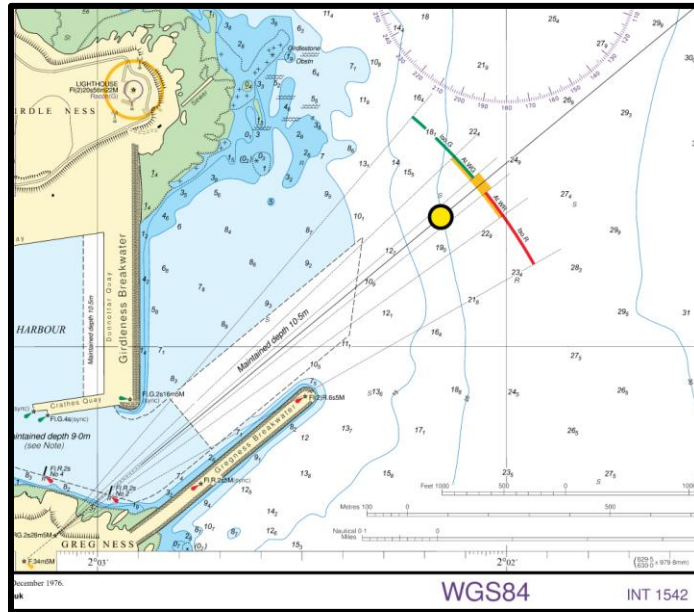


Local Notice to Mariners 32 / 2025

Deployment of ADCP Unit



Position:

Latitude: 57°08.17'N Longitude: 002°02.17'W

Mariners and port users are advised that an Acoustic Doppler Current Profiler (ADCP) unit has been deployed on the seabed at the above location – delineated by the yellow circular area in the above chartlet (in the vicinity of the 20m contour-line North East of the South Harbour navigational channel).

The unit has been deployed and is positioned on the seabed and does not pose a hazard to surface navigation.

No surface markers or buoyage are associated with this units deployment.

Local Notice to Mariners 25 / 2025 is hereby cancelled.

Port of Aberdeen
Marine Department
16th August 2025

Vessel Owners, Operators, Agents, Berth Operators etc should ensure that the contents of this Navigation Notice are made known to the Masters of their vessels.

Document	Title	Revision	Effective Date
PoA-MAR-FOR-003	Notice to Mariners	00	March 2025